

World Journal of *Hepatology*

World J Hepatol 2018 October 27; 10(10): 639-784



EDITORIAL

- 639 European Association for the Study of the Liver and French hepatitis C recent guidelines: The paradigm shift

Loustaud-Ratti V, Debette-Gratien M, Carrier P

REVIEW

- 645 Aberrant expression of alternative isoforms of transcription factors in hepatocellular carcinoma

Krivtsova O, Makarova A, Lazarevich N

- 662 Complements are involved in alcoholic fatty liver disease, hepatitis and fibrosis

Lin CJ, Hu ZG, Yuan GD, Lei B, He SQ

MINIREVIEWS

- 670 Era of direct acting anti-viral agents for the treatment of hepatitis C

Ahmed M

- 685 Nutritional support in chronic liver disease and cirrhotics

Shergill R, Syed W, Rizvi SA, Singh I

- 695 Anthropometric indicators of visceral adiposity as predictors of non-alcoholic fatty liver disease: A review

Almeida NS, Rocha R, Cotrim HP, Daltro C

- 702 Dental pulp cell bank as a possible future source of individual hepatocytes

Ohkoshi S, Hirono H, Nakahara T, Ishikawa H

- 708 Adiponectin as a novel biomarker for liver fibrosis

Udomsinprasert W, Honsawek S, Poovorawan Y

ORIGINAL ARTICLE

Basic Study

- 719 Experimental bio-artificial liver: Importance of the architectural design on ammonia detoxification performance

Pizarro MD, Mamprin ME, Daurelio LD, Rodriguez JV, Mediavilla MG

Retrospective Cohort Study

- 731 Spleen stiffness mirrors changes in portal hypertension after successful interferon-free therapy in chronic-hepatitis C virus patients

Ravaioli F, Colecchia A, Dajti E, Marasco G, Alemanni LV, Tamè M, Azzaroli F, Brillanti S, Mazzella G, Festi D

EVIDENCE-BASED MEDICINE

- 743 Comparison of hepatitis C virus testing recommendations in high-income countries
Irvin R, Ward K, Agee T, Nelson NP, Vellozzi C, Thomas DL, Millman AJ

SYSTEMATIC REVIEW

- 752 Thrombosis prophylaxis in pediatric liver transplantation: A systematic review
Nacoti M, Ruggeri GM, Colombo G, Bonanomi E, Lussana F

META-ANALYSIS

- 761 Liver transplantation and atrial fibrillation: A meta-analysis
Chokesuwattanaskul R, Thongprayoon C, Bathini T, Ungprasert P, Sharma K, Wijarnpreecha K, Pachariyanon P, Cheungpasitporn W

CASE REPORT

- 772 Proton beam therapy in apneic oxygenation treatment of an unresectable hepatocellular carcinoma: A case report and review of literature
Lin YL
- 780 Neuroendocrine tumor incidentally detected during living donor hepatectomy: A case report and review of literature
Akbulut S, Isik B, Cicek E, Samdanci E, Yilmaz S

ABOUT COVER

Editorial Board Member of *World Journal of Hepatology*, Seren Ozenirler, MD, Professor, Gazi University Department of Gastroenterology and Hepatology, Besevler, Ankara 06510, Turkey

AIM AND SCOPE

World Journal of Hepatology (*World J Hepatol*, *WJH*, online ISSN 1948-5182, DOI: 10.4254), is a peer-reviewed open access academic journal that aims to guide clinical practice and improve diagnostic and therapeutic skills of clinicians.

WJH covers topics concerning liver biology/pathology, cirrhosis and its complications, liver fibrosis, liver failure, portal hypertension, hepatitis B and C and inflammatory disorders, steatohepatitis and metabolic liver disease, hepatocellular carcinoma, biliary tract disease, autoimmune disease, cholestatic and biliary disease, transplantation, genetics, epidemiology, microbiology, molecular and cell biology, nutrition, geriatric and pediatric hepatology, diagnosis and screening, endoscopy, imaging, and advanced technology. Priority publication will be given to articles concerning diagnosis and treatment of hepatology diseases. The following aspects are covered: Clinical diagnosis, laboratory diagnosis, differential diagnosis, imaging tests, pathological diagnosis, molecular biological diagnosis, immunological diagnosis, genetic diagnosis, functional diagnostics, and physical diagnosis; and comprehensive therapy, drug therapy, surgical therapy, interventional treatment, minimally invasive therapy, and robot-assisted therapy.

We encourage authors to submit their manuscripts to *WJH*. We will give priority to manuscripts that are supported by major national and international foundations and those that are of great basic and clinical significance.

INDEXING/ABSTRACTING

World Journal of Hepatology (*WJH*) is now abstracted and indexed in PubMed, PubMed Central, Emerging Sources Citation Index (Web of Science), Scopus, China National Knowledge Infrastructure (CNKI), and Superstar Journals Database.

EDITORS FOR THIS ISSUE

Responsible Assistant Editor: *Xiang Li*
 Responsible Electronic Editor: *Han Song*
 Proofing Editor-in-Chief: *Lian-Sheng Ma*

Responsible Science Editor: *Ying Dou*
 Proofing Editorial Office Director: *Jin-Lei Wang*

NAME OF JOURNAL
World Journal of Hepatology

ISSN
 ISSN 1948-5182 (online)

LAUNCH DATE
 October 31, 2009

FREQUENCY
 Monthly

EDITORIAL BOARD MEMBERS
 All editorial board members resources online at <http://www.wjgnet.com/1948-5182/editorialboard.htm>

EDITORIAL OFFICE
 Jin-Lei Wang, Director
World Journal of Hepatology
 Baishideng Publishing Group Inc
 7901 Stoneridge Drive, Suite 501,

Pleasanton, CA 94588, USA
 Telephone: +1-925-2238242
 Fax: +1-925-2238243
 E-mail: editorialoffice@wjgnet.com
 Help Desk: <http://www.f6publishing.com/helpdesk>
<http://www.wjgnet.com>

PUBLISHER
 Baishideng Publishing Group Inc
 7901 Stoneridge Drive, Suite 501,
 Pleasanton, CA 94588, USA
 Telephone: +1-925-2238242
 Fax: +1-925-2238243
 E-mail: bpgoffice@wjgnet.com
 Help Desk: <http://www.f6publishing.com/helpdesk>
<http://www.wjgnet.com>

PUBLICATION DATE
 October 27, 2018

COPYRIGHT
 © 2018 Baishideng Publishing Group Inc. Articles published by this Open Access journal are distributed under the terms of the Creative Commons Attribution Non-commercial License, which permits use, distribution, and reproduction in any medium, provided the original work is properly cited, the use is non commercial and is otherwise in compliance with the license.

SPECIAL STATEMENT
 All articles published in journals owned by the Baishideng Publishing Group (BPG) represent the views and opinions of their authors, and not the views, opinions or policies of the BPG, except where otherwise explicitly indicated.

INSTRUCTIONS TO AUTHORS
<http://www.wjgnet.com/bpg/gerinfo/204>

ONLINE SUBMISSION
<http://www.f6publishing.com>

Neuroendocrine tumor incidentally detected during living donor hepatectomy: A case report and review of literature

Sami Akbulut, Burak Isik, Egemen Cicek, Emine Samdanci, Sezai Yilmaz

Sami Akbulut, Burak Isik, Sezai Yilmaz, Department of Surgery and Liver Transplant Institute, Inonu University Faculty of Medicine, Malatya 44280, Turkey

Egemen Cicek, Department of Surgery, Inonu University Faculty of Medicine, Malatya 44280, Turkey

Emine Samdanci, Department of Pathology, Inonu University Faculty of Medicine, Malatya 44280, Turkey

ORCID Number: Sami Akbulut (0000-0002-6864-7711); Burak Isik (0000-0002-2395-3985); Egemen Cicek (0000-0003-2691-7418); Emine Samdanci (0000-0002-0034-5186); Sezai Yilmaz (0000-0002-8044-0297).

Author contributions: Akbulut S, Isik B, and Cicek E designed the report; Akbulut S collected the patient's clinical data; Samdanci E provided histopathological information; Akbulut S and Yilmaz S analyzed the data and wrote the paper.

Informed consent statement: The patient involved in this study gave his informed written consent prior to study enrollment, authorizing the use and disclosure of his protected health information.

Conflict-of-interest statement: The author declares no potential conflict of interest.

CARE Checklist (2013) statement: Guidelines of the CARE Checklist (2013) have been adopted while writing this manuscript.

Open-Access: This article is an open-access article which was selected by an in-house editor and fully peer-reviewed by external reviewers. It is distributed in accordance with the Creative Commons Attribution Non Commercial (CC BY-NC 4.0) license, which permits others to distribute, remix, adapt, build upon this work non-commercially, and license their derivative works on different terms, provided the original work is properly cited and the use is non-commercial. See: <http://creativecommons.org/licenses/by-nc/4.0/>

Manuscript source: Invited manuscript

Correspondence to: Sami Akbulut, MD, Associate Professor,

Department of Surgery and Liver Transplant Institute, Inonu University Faculty of Medicine, Elazig Yolu 10. Km, Malatya 44280, Turkey. akbulutsami@gmail.com
Telephone: +90-422-3410660
Fax: +90-422-3410036

Received: May 18, 2018

Peer-review started: May 18, 2018

First decision: June 6, 2018

Revised: June 19, 2018

Accepted: June 27, 2018

Article in press: June 28, 2018

Published online: October 27, 2018

Abstract

To our best knowledge, no case of a tumor that was incidentally detected during living donor hepatectomy (LDH) has been reported in the English language medical literature. We present two cases in which grade I neuroendocrine tumors (NET) were incidentally detected during our twelve-year LDH experience. First Case: A 26-year-old male underwent LDH for his brother suffering from HBV-related chronic liver disease (CLD). After right lobe LDH, intestinal length was measured as part of a study concerning the relationship between small intestinal lengths and surgical procedure. At this stage, a mass lesion with a size of 10 mm × 10 mm was detected on the antimesenteric surface, approximately 90 cm proximal to the ileocecal valve. A wedge resection with primary intestinal anastomosis was performed. Second Case: A 29-year-old male underwent right lobe LDH for his father with hepatitis B virus (HBV)-related CLD. An abdominal exploration immediately prior to the closure of the incision revealed that the appendix vermiformis was edematous and had firmness with a size of 8-10 mm at its tip. An appendectomy was performed. The pathological examinations of the specimens of both patients revealed

grade 1 NET. In conclusion, even if patients undergoing LDH are healthy individuals, whole abdominal cavity should be gently palpated and all findings recorded after completing laparotomy. Suspected masses or lesions should be confirmed by frozen section examination. Such an approach would avert potential medicolegal issues.

Key words: Living donor hepatectomy; Incidental tumor; Neuroendocrine tumor; Chronic liver disease; Hepatitis B virus

© **The Author(s) 2018.** Published by Baishideng Publishing Group Inc. All rights reserved.

Core tip: To our best knowledge, no case of a tumor that was incidentally detected during living donor hepatectomy (LDH) has been reported in the English language medical literature. Herein, we present two cases in which grade I neuroendocrine tumors were incidentally detected during our twelve-year LDH experience. Even if patients undergoing LDH are healthy individuals, the whole abdominal cavity should be gently palpated and all findings be recorded after completing laparotomy. Suspected masses or lesions should be confirmed by frozen section examination. Such an approach would avert potential medicolegal issues.

Akbulut S, Isik B, Cicek E, Samdanci E, Yilmaz S. Neuroendocrine tumor incidentally detected during living donor hepatectomy: A case report and review of literature. *World J Hepatol* 2018; 10(10): 780-784 Available from: URL: <http://www.wjgnet.com/1948-5182/full/v10/i10/780.htm> DOI: <http://dx.doi.org/10.4254/wjh.v10.i10.780>

INTRODUCTION

While deceased donors are an important part of the liver donor pool in western countries, living donors constitute an important portion of the donor pool in many Asian countries including Turkey^[1]. The most important problem with living donor liver transplantation is the mortality and morbidity risk faced by completely healthy donor candidates due to a major surgery like liver resection. In order to minimize those risks, all living liver donor (LLD) candidates undergo an examination according to an algorithm consisting of biochemical blood tests and advanced radiological instruments^[2]. Incidental hemangioma, focal nodular hyperplasia, cystic lesions, median arcuate ligament, and ventricular septal defect have been rarely reported to be detected during examinations of LLD candidates^[3-5]. On the other hand, no publication other than our study has ever reported unusual findings such as cancer detected incidentally in the liver or other intraabdominal organs during either preoperative investigations or in a living donor hepatectomy (LDH) procedure^[6]. In this study we report two neuroendocrine tumor (NET) cases detected

incidentally during our 12-year LDH experience.

CASE REPORT

Case 1

A 26-year-old healthy man applied to our transplant center for being a LLD to his 37-year-old brother with chronic liver disease (HBV). The donor candidate was taken into the operating room for LDH in May 2017. A laparotomy was performed through an incision starting from xiphoid to umbilicus and extending laterally on the right side. As no macroscopic finding was detected in the liver, a right lobe LDH was performed. As part of a study conducted in our department investigating the relationship of mesenteric and antimesenteric lengths of small intestine with the surgical procedure, intestinal lengths of this patient were also measured. At this time, a mass lesion measuring approximately 10 mm was detected on the antimesenteric face of the intestine, approximately 90 cm proximal to the ileocecal valve (Figure 1). The mass was resected together with the mesentery of the adjacent intestinal segment. A wedge resection with primary intestinal anastomosis was performed. Intestinal mucosa and submucosa were closed with polyglactin 910 suture material while the seromuscular layer was closed with polypropylene. The patient experienced no complications during his postoperative follow-up and was discharged. A histopathological examination revealed a grade I neuroendocrine tumor (carcinoid tumor) with a size of 7 mm × 5 mm, which had intact surgical margins (Figure 2). An immunohistochemical analysis showed that it was NSE (+), Chromogranin (+), Synaptophysin (+), and Ki67 proliferation index (1%-2%) positive (Figures 3 and 4). The patient was put under follow-up by the medical oncology department, and a thoracoabdominal computerized tomography taken in the first controls revealed no additional lesions.

Case 2

A 29-year-old healthy man applied to our transplant center for being a LLD candidate for his 51-year-old father who had chronic liver disease (HBV + HCC). His preoperative biochemical tests and radiological studies were normal. The patient was taken into the operating room for right donor hepatectomy in May 2008. A laparotomy was performed through an incision starting from xiphoid to umbilicus and extending laterally on the right side. As no macroscopic finding was detected in the liver, right lobe LDH was performed. At the time when the surgeon suspended the anterior abdominal wall in order to place a drain into the surgical field, it was noticed that the appendix vermiformis was edematous and had prominent superficial arterioles. In addition, a firmness measuring 8-10 cm in size was palpated at the tip of the appendix. Therefore, an appendectomy was performed. As no complications developed at the postoperative follow-up, the patient was discharged to be seen at



Figure 1 Intraoperative view of the tumor located in the antimesenteric border of the small intestine.

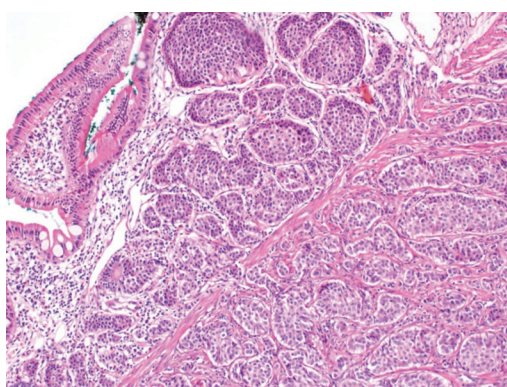


Figure 2 Tumor cells are seen in the submucosa with insular pattern (HE × 100).

control visits. The pathology report of the appendix vermiformis showed a grade I neuroendocrine tumor (NET) with a diameter of 10 cm at the tip of the appendix vermiformis, which showed full-thickness invasion but did not spare the mesoappendix (Figure 2). In addition, the lesion was NSE (+), Chromogranin (+), Synaptophysin (+), and Ki67 (1%) positive upon immunohistochemical analysis (Figures 3 and 4). As the patient was living in another city, he is currently under follow-up of another center there. He has recently informed us that no problems have occurred in his final control visit.

DISCUSSION

The World Health Organization has classified NETs into two main categories: well differentiated (low grade, intermediate grade, high grade neuroendocrine tumor) and poorly differentiated (high grade neuroendocrine carcinoma). The basic criteria for this classification are the Ki67 proliferation index (< 3%, 3%-20%, > 20%) and number of mitosis (< 2 mitosis, 2-20 mitosis, > 20 mitosis).

NETs most commonly involve the small intestine. NETs are most commonly located in the first 60 cm segment before the ileocecal valve. Unlike appendix NETs, small intestinal NETs have the potential to make

both nodal and distant metastasis independent of their size. Therefore, the most appropriate surgical approach is to perform a partial small intestinal resection to involve lymph nodes and mesentery, independent of the tumor size. As small intestinal NETs have the potential of being multiple, all intestinal loops should be carefully inspected during the operation^[7-9].

Appendix vermiformis is the second most commonly involved organ by NETs in the gastrointestinal system^[10]. The majority of appendix NETs are incidentally detected in patients taken into operating room for a presumed diagnosis of acute appendicitis. NETs are diagnosed at a rate of 0.3%-2.27% in patients diagnosed with acute appendicitis while they are detected in 1.8%-2.3% of patients undergoing incidental appendectomy^[7-9]. The prognosis and metastasis potential of appendix NETs depend on their size. Ninety-five percent of appendix NETs are smaller than 2 cm at the time of diagnosis and have a low metastasis potential (4%). In tumors with a diameter ≥ 2 cm or patients with mesoappendix invasion, right hemicolectomy is the most appropriate approach. In tumors with a diameter ranging between 1.0 cm and 1.9 cm, adjunct hemicolectomy is the most appropriate approach when one or more of the following parameters exists: mesoappendix invasion, vascular invasion, high proliferation index (grade 2), suspicious/positive surgical margins, and mixed histology (goblet cell carcinoid, adenocarcinoid). Simple appendectomy is sufficient for patients without mesoappendix invasion despite a diameter of 1.0-1.9 cm and appendix NETs with a diameter < 1 cm. No adjunctive surgical procedure was undertaken since the patient presented here had a grade I NET.

The follow-up of patients with NET depends on tumor size and grade. One or a combination of several diagnostic modalities of biochemical (5-hydroxy-indoleacetic acid, serum chromogranin), endoscopic (pan endoscopy, colonoscopy), radiological (computed tomography, magnetic resonance imaging, Indium-111 pentetretotide (OctreoScan), and functional PET imaging with 68-Ga DOTA-TATE can be used for diagnosis. Patients with an appendix NET having a diameter of ≥ 2 cm should be evaluated clinically and with biochemical/radiological studies whenever indicated at three and twelve months postoperation. Controls should be carried out after one year and advanced radiological tests should be performed as needed. In cases with a tumor size of less than 2 cm routine controls are not needed. The follow-up protocol of small intestinal NETs and appendix NETs should be in the form of close follow-up.

This case study brings into question whether it is necessary to palpate the whole abdominal cavity and especially gastrointestinal organs in healthy individuals undergoing laparotomy for LDH. Many studies so far have recommended not to touch the gastrointestinal tract unless indicated because even powder on surgical gloves may trigger the development of postoperative adhesions. In addition, handling, palpating, or removing the bowel

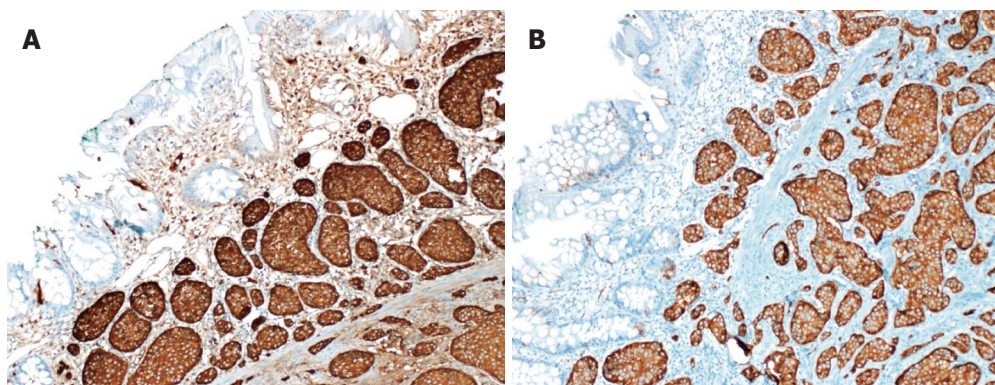


Figure 3 Positive immunostaining of tumor cells with chromogranin or synaptophysin antibody (HE \times 100). A: Chromogranin; B: Synaptophysin.

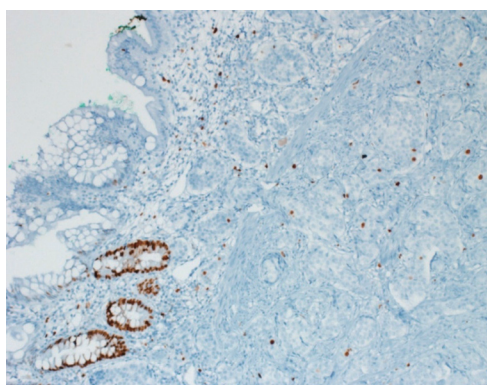


Figure 4 The low proliferation index in the tumor with Ki67 antibody (HE \times 100).

loops may delay the return of intestinal motility during the postoperative period. Another question is what to do when a mass lesion is encountered in the gastrointestinal system. We suggest two methods: (1) when a tumoral lesion is detected in the gastrointestinal system before the LDH procedure, the lesion's gross macroscopic features should be evaluated and the entire mass or part of it should be resected and sent for frozen examination. When the result of the latter is a benign pathology, the hepatectomy procedure should be resumed. Whenever the result of the frozen examination is a malignant condition, hepatectomy procedure should be aborted and a definitive surgery should be performed against the mass; and (2) when a tumoral lesion is encountered incidentally at the exploration after the completion of the LDH procedure, a frozen examination of the tumoral lesion should be performed. In these patients, too, the result of the frozen examination should be obtained and surgical treatment should be carried out on the basis of oncological principles. However, an important caveat is what would be the fate of the liver graft harvested from these patients. In our opinion, ultrasonography should be performed for the living liver graft on the back table, and it should be transplanted when no hepatic lesion is identified. We assume that preoperative hepatic MDCT and dynamic MRI examinations are already negative for

hepatic lesions in such patients. Recipients of such a liver should still be closely followed.

Unfortunately, we did not perform frozen examination in both patients presented here. The lesion of the patient with the appendix NET was both very small and located at the tip of the appendix. Hence, the frozen report would not affect our surgical strategy. As for the intestinal NET case, the lesion was of completely benign appearance, as can be seen in Figure 1. Despite this, we resected the segment with the lesion on the basis of the oncological principles. The recipients of both donors were put under close follow-up, and neither developed any lesion suspected to be a tumor to the date of the writing of this article.

In patients undergoing LDH operation, the abdominal cavity may be explored very gently using powderless gloves. This approach both creates a chance for early detection of some unexpected lesions and avoids potential medicolegal problems.

Whenever a suspicious lesion is detected before starting the LDH procedure, a frozen examination should be done from that lesion. When the frozen report indicates a malignant lesion, the LDH procedure should be aborted and the lesion should be resected on the basis of oncological principles. However, the question whether donors with NETs having a diameter smaller than 2 cm that are located to the tip of the appendix should be used is open to discussion.

ARTICLE HIGHLIGHTS

Case characteristics

We aimed to present two cases in which grade I neuroendocrine tumors were incidentally detected during our twelve-year living donor hepatectomy experience.

Clinical diagnosis

Intraoperative appearance of the lesions of both patients was compatible with benign disease.

Differential diagnosis

Differential diagnosis of the first case included calcified nodule, benign intestinal tumor, and early stage malignant tumor. Differential diagnosis of the second

case includes acute appendicitis, mucocele, and carcinoid tumor

Laboratory diagnosis

No abnormal findings were detected in preoperative biochemical blood tests in both living liver donor candidates.

Imaging diagnosis

No abnormal findings were detected in preoperative radiological examinations in both living liver donor candidates.

Pathological diagnosis

The immunohistochemical examinations of the specimens of both patients were reported as grade I neuroendocrine tumor.

Treatment

While a wedge resection with primary intestinal anastomosis was performed in the first case, simple appendectomy was performed in the second case.

Related reports

To our knowledge, no publication other than our study has ever reported unusual findings, such as cancer, detected incidentally during a living donor hepatectomy procedure.

Experiences and lessons

Even if patients undergoing living donor hepatectomy are healthy individuals, the whole abdominal cavity should be gently palpated and all findings recorded after completing laparotomy. Suspected masses or lesions should be confirmed by frozen section examination.

REFERENCES

- 1 Akbulut S, Yilmaz S. Liver transplantation in Turkey: historical review and future perspectives. *Transplant Rev (Orlando)* 2015; **29**: 161-167 [PMID: 25535023 DOI: 10.1016/j.trre.2014.12.002]
- 2 Sapisochin G, Goldaracena N, Laurence JM, Levy GA, Grant DR, Cattral MS. Right lobe living-donor hepatectomy—the Toronto approach, tips and tricks. *Hepatobiliary Surg Nutr* 2016; **5**: 118-126 [PMID: 27115005 DOI: 10.3978/j.issn.2304-3881.2015.07.03]
- 3 Salama IA, Dessouky BA, Korayem EM, Aal SA. Impact of multislice spiral computed tomography on donor selection and surgical planning in living-related liver transplant. *Exp Clin Transplant* 2010; **8**: 111-124 [PMID: 20565367]
- 4 Zirpe D, Muthukumaran CS, Vaidya A, Ramamurthy A. Incidental Ventricular Septal Defect (VSD) in the Donor of a Live Donor Liver Transplant: Tackle and Proceed. *J Clin Diagn Res* 2016; **10**: PD06-PD07 [PMID: 27790513 DOI: 10.7860/JCDR/2016/20839.8448]
- 5 Akamatsu N, Sugawara Y, Tamura S, Kaneko J, Togashi J, Makuuchi M. Impact of celiac axis stenosis on living donor hepatectomy. *Transplant Proc* 2006; **38**: 2948-2950 [PMID: 17112871 DOI: 10.1016/j.transproceed.2006.08.107]
- 6 Yilmaz M, Olmez A, Piskin T, Unal B, Ersan V, Sarici KB, Dirican A, Yilmaz S. Incidental appendectomy in donors undergoing hepatectomy for living-donor liver transplantation. *Transplant Proc* 2012; **44**: 1630-1634 [PMID: 22841232 DOI: 10.1016/j.transproceed.2012.04.012]
- 7 Akbulut S, Tas M, Sogutcu N, Arikanoglu Z, Basbug M, Ulku A, Semur H, Yagmur Y. Unusual histopathological findings in appendectomy specimens: a retrospective analysis and literature review. *World J Gastroenterol* 2011; **17**: 1961-1970 [PMID: 21528073 DOI: 10.3748/wjg.v17.i15.1961]
- 8 Tartaglia D, Bertolucci A, Galatioto C, Palmeri M, Di Franco G, Fantacci R, Furbetta N, Chiarugi M. Incidental appendectomy? Microscopy tells another story: A retrospective cohort study in patients presenting acute right lower quadrant abdominal pain. *Int J Surg* 2016; **28**: 149-152 [PMID: 26931338 DOI: 10.1016/j.ijssu.2016.02.085]
- 9 Lee JH, Choi JS, Jeon SW, Son CE, Bae JW, Hong JH, Lee KW, Lee YS. Laparoscopic incidental appendectomy during laparoscopic surgery for ovarian endometrioma. *Am J Obstet Gynecol* 2011; **204**: 28.e1-28.e5 [PMID: 20887970 DOI: 10.1016/j.ajog.2010.08.042]
- 10 Caldarella A, Crocetti E, Paci E. Distribution, incidence, and prognosis in neuroendocrine tumors: a population based study from a cancer registry. *Pathol Oncol Res* 2011; **17**: 759-763 [PMID: 21476126 DOI: 10.1007/s12253-011-9382-y]

P- Reviewer: Maida M, Ozdemir F, Sazcı A, Sugimura H
S- Editor: Ma YJ **L- Editor:** Filipodia **E- Editor:** Yin SY





Published by **Baishideng Publishing Group Inc**
7901 Stoneridge Drive, Suite 501, Pleasanton, CA 94588, USA
Telephone: +1-925-223-8242
Fax: +1-925-223-8243
E-mail: bpgoffice@wjgnet.com
Help Desk: <http://www.f6publishing.com/helpdesk>
<http://www.wjgnet.com>

